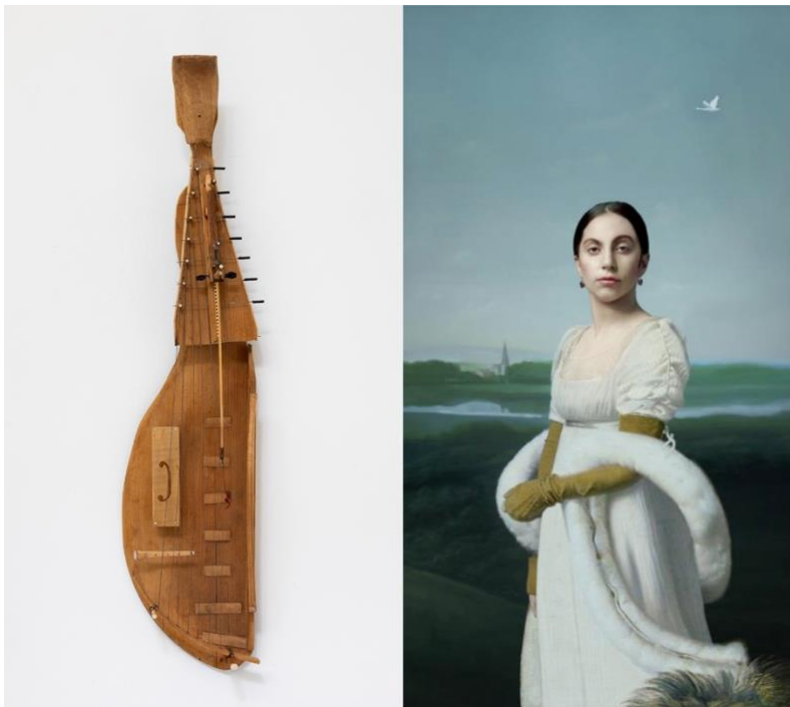


PRESS RELEASE

»Songs Without Words: The Art of Music« Nassau County Museum of Art, New York



Adrian Nivola, *Temple for a Guitar*, 2021, wood, wire, enamel, 22 x 4 3/4 x 4 1/2 inches, courtesy of The Drawing Room, East Hampton, New York | Robert Wilson, *Lady Gaga: Mademoiselle Caroline Rivière d'après Jean-Auguste-Dominique Ingres*, 2013. © Robert Wilson

November 20, 2021 – March 6, 2022

Tuesday–Sunday 11 am–4.45 pm

Nassau County Museum of Art

One Museum Drive

Roslyn Harbor, NY 11576, USA

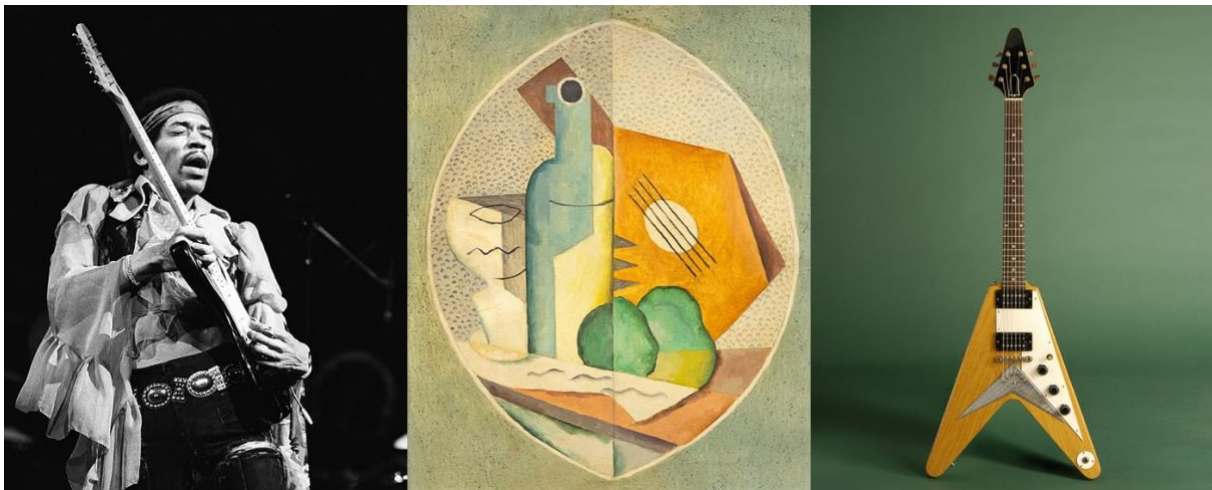
www.nassaumuseum.org

Nassau County Museum of Art is dedicating a comprehensive new exhibition to the dialogue between art and music across cultures and borders. It includes not only masterpieces of visual art but iconic instruments as well (a rare Cremonese violin, vintage guitars from rock legends, and percussion, string and woodwind instruments from all along the ancient Silk Road).

Favorite modern masters like Degas, Gris, Kandinsky, Matisse and Vuillard will be joined by the contemporary artists for whom music is a constant source of

inspiration, such as David Hockney , Jasper Johns, Idris Khan, Joan Snyder, Robert Wilson and many others.

Photography and memorabilia showcasing rock, jazz and Broadway legends will be on display, alongside musical scores and manuscripts inscribed by the hands of the great performers and composers.



George Kalinsky, *Jimi Hendrix*, May 18, 1969, gelatin silver print, 16 x 20 inches, courtesy of Staley-Wise Gallery, New York | Juan Gris, *Untitled*, c. early to mid-1920s, oil and sand on canvas, 18.125 x 15 inches, © The Shin Collection, courtesy of Shin Gallery, New York | Gibson Flying V Guitar

Combining historic instruments, such as the *Les Paul* guitar played by Keith Richards on the Ed Sullivan show in 1964 and Neil Young's *Flying V* guitar as well as Paganini's famous *Cannon* violin, with paintings and sculpture by Romare Bearden, Edgar Degas, Dorothy Dehner, Juan Gris, Lyonel Feininger, Wassily Kandinsky, Henri Matisse, Jasper Johns, this comprehensive celebration of the close relationship between music and art is an experience for eyes and ears alike.

From a gallery of memorabilia that includes art by Miles Davis, Tony Bennett and Frank Zappa, a Grammy award won by Jimmy Webb, along with vintage photographs and manuscripts featuring Aretha Franklin, Jimi Hendrix, Joni Mitchell, Billie Holiday, Frank Sinatra, to sculptural instruments, like the room-size *Gamelatron* installation of automated gongs created by Aaron Taylor Kuffner, music lovers of all generations will find their favorites. Music like visual art is universal and can be understood across cultures and languages.

The exhibition brings together not only a kaleidoscope of some of the greatest of Western classical music, including paintings and sculpture created to the soundtrack of Bach and Beethoven, but the instruments and art of cultures from Africa and Australia to Asia and South America. It includes an important selection of Japanese woodblock prints alongside the instruments depicted as well as the talking drums of Africa, a Middle Eastern oud, and harps, flutes and string instruments from all along the Silk Road, many of which will be played live during the many concerts and lectures programmed during the run of the show.



Chikanobu, *Kabuki Play*; Onoe Kikugoro as *Bonji no Kiyojiro* and Iwai Matsunosuke as *Omaki*, 1886, woodblock, 14.25 x 27.75 inches, courtesy of Ronin Gallery, New York

Some of the most interesting contemporary artists whose work explores sound and music are represented in this groundbreaking exhibition, including Tim Rollins and K.O.S., Joan Snyder, Christine Sun Kim and Robert Wilson, whose mesmerizing video portrait of Lady Gaga as Mademoiselle Caroline Rivière by Jean-Auguste-Dominique Ingres with a soundtrack by Michael Galasso is a highlight. Alongside a selection of drawings from his iconic stage work *Deafman Glance* in a gallery with Idris Khan's important new body of work *Blue Rhythms*, complemented by works on paper by John Cage and Jasper Johns and, in a separate gallery installation, Bettina WitteVeen's poetic *film Sparks Of The Deity*, shot in Bhutan, Indonesia, Cambodia, Cuba, Sri Lanka and on a Lakota reservation in South Dakota.

The giant, walk-in painting by Ben Schonzeit, *The Music Room*, that wowed Soho in the Seventies when it won critical acclaim, will be on view for the first time in decades.

Among the many discoveries to be made are important works by Hassan Hajjaj, Moyosore Martins, Adrian Nivola, Lori Nix/Kathleen Gerber and Christine Sun Kim, internationally known art stars, appearing for the first time at the Nassau Museum.

The exhibition is organized by Charles A. Riley II, PhD, Director Nassau County Museum of Art, and Curatorial Associate Jennifer Haller, with support from the internationally renowned classical musicians and collectors of art and important instruments Sean, David and Lauren Carpenter.



Hassan Hajjaj, *Muneera & Sukina, Aka Poetic Pilgrimage 2016/1437* (Gregorian/Hijri), Metallic Lambda on 3mm Dibond in a Poplar Sprayed-White Frame with Blue, Image: 44" x 30", framed: 56" x 38 3/8" x 3 1/8" © Hassan Hajjaj, courtesy of Yossi Milo Gallery, New York | Bettina WitteVeen, *Sparks Of The Deity, 2018*, film still (detail), courtesy of Bettina WitteVeen | Idris Khan, *Blue Rhythms, 2019*, gesso and oil stick on 18 premier black and white fiber prints mounted on aluminum, 31 1/8 x 23 1/4 x 2 3/16 inches (framed, each) overall, framed: 66 1/4 x 241 1/4 x 2 3/16 inches, courtesy of the artist and Sean Kelly, New York

Programming for the show includes concerts, artist talks in the galleries, lectures and a director's seminar series. A fully illustrated catalogue with essays by the curators and a musical score composed on commission is available. The catalogue was made possible with an anonymous donation, and the exhibition is supported by a grant from the Claire Friedlander Family Foundation.



Tim Rollins and K.O.S., *A Midsummer Night's Dream (after Shakespeare and Mendelssohn)*, 2014, watercolor, ink, fruit juices, Thai mulberry paper, collage, mustard seed, music score pages on canvas, 48 x 72 inches, courtesy of Studio K.O.S. and Lehmann Maupin, New York, Hong Kong, Seoul, and London



Nassau County Museum of Art is located at One Museum Drive in Roslyn Harbor. The museum is open Tuesday–Sunday, 11 am–4:45 pm. Admission is \$15 for adults, \$10 for seniors (62 and above) and \$5 for students and children (4 to 12).

Facebook: www.facebook.com/nassaucountymuseumofart/

Instagram: www.instagram.com/nassaumuseum/

Media Contact US:

Charles Riley

+1 (516) 484-9338 x 37

criley@nassaumuseum.org

Public Relations Associate Germany:

Lydia Schmid Consulting

Goethestraße 2–3

10623 Berlin

+49 176 31788414

lydia@lydiaschmidconsulting.com

Find high resolution press images [here](#).